

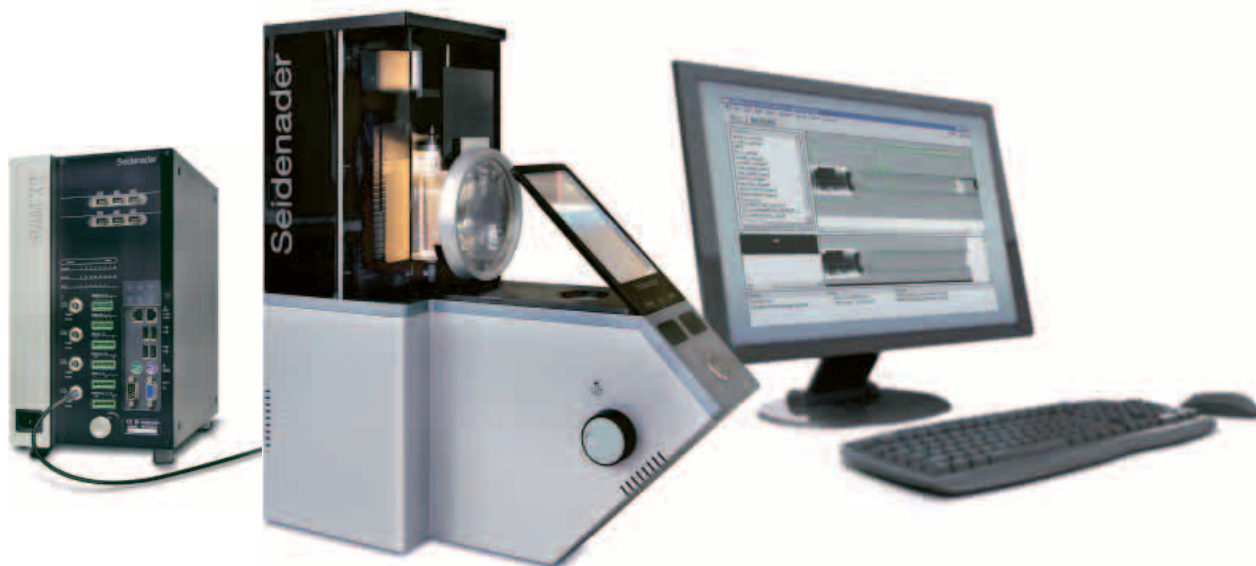
Seidenader Inspection Machines

Pharma Technology Solutions

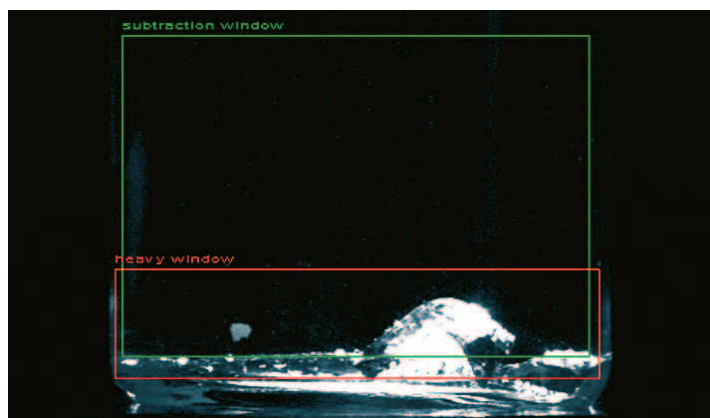


VPE / VPE-C

Seidenader VPE
for Visual or Camera Based Sample Checks
of Ampules, Vials and Prefilled Syringes

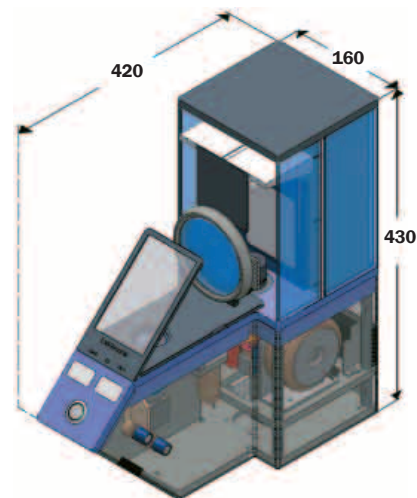


Seidenader VPE-C



Technical Data Seidenader VPE-C / VPE:

- Application: Vials, ampules, cartridges, glass and plastic syringes
- Product size: 0.5 ml – 100 ml depending of container
Cartridges, vials and ampules (DIN):
max. 51.6 mm container diameter / max. 135 mm container height
Syringes (DIN): max. 17.05 mm diameter / max. 140 mm height
- Inspection criteria: Particulate matter, fibers, suspended particles
- Dimensions: VPE-C: ca. 160 x 420 x 430 mm / VPE: ca. 160 x 315 x 380 mm
- Weight: VPE-C: 15 kg / VPE: 4 kg
- Voltage/frequency: 230 V, 1 Ph, 50 Hz, ca. 100 W, other voltages possible through transformer



Seidenader VPE/VPE-C

for visual or camera based inspection of ampoules, vials and prefilled syringes



Seidenader VPE

The compact and versatile inspection device VPE is used for quality control sample checks of containers ranging from 0.5 ml to 100 ml. Two models are available: The VPE allows visual checks by an operator and VPE-C camera inspection for particles in liquid products using the same illumination and rotation features as used in Seidenader inspection machines.

The containers are placed onto a self centering plate which is rotated with adjustable speed. Particulate matter in the liquid is whirled up. A highly concentrated light beam with adjustable intensity through the bottom of the container

causes particles to reflect light (Tyndall Effect) and therefore facilitates the inspection. For the inspection of cartridges and syringes polarized back light can be switched on additionally.



Advantages:

- For a wide range of containers and sizes
- Portable, flexible and easy to handle
- Quick changeover without tools
- Tyndall light through container bottom, intensity adjustable
- Polarized back light, intensity adjustable
- Magnifying lens, 4 diopter

Fields of application:

- Analyze sample sets
- Verify rejects from production
- Train operators
- Document defects
- Tune camera inspection systems
- Develop new vision recipes



Function:

- Press button for rotation of liquid to whirl up particulate matter.
- Adjust rotation speed.
- Release button to stop rotation of container and check for particles either visually or by camera.
- Easily detect particles by means of highly concentrated light through bottom of the containers (Tyndall Effect), polarized back light, and magnifying lens.

- The operator or camera can see the full inspection field, no clips or fingers block the view.
- Adjust polarization to the level required
- Document camera inspection results and defects detected, and print or save to hard drive.

Seidenader Inspection Machines

Pharma Technology Solutions



Seidenader VPE

Seidenader Maschinenbau GmbH

Lilienthalstr. 8
85570 Markt Schwaben
Germany
Phone +49 8121 802-0
Fax +49 8121 802-100
info@seidenader.de
www.seidenader.de

KÖRBER MEDIPAK GmbH

Nagelsweg 33-35
20097 Hamburg
Germany
Phone +49 40 21107-480
Fax +49 40 21107-481
info@koerber-medipak.com
www.koerber-medipak.com

The product range of Seidenader Maschinenbau GmbH includes:

- High-performance inspection machines for a wide range of pharmaceutical products and containers
- Semi-automatic machines for inspection of parenteral products
- Exterior cleaning and drying machines for ampoules, vials and cartridges
- Sorting and inspection machines for tablets and capsules

Since we are constantly working on the improvement of our high-quality machines, the texts, illustrations and figures on these pages are illustrative only and not binding.

032011