

Inspection Machine Seidenader **BFS** for Liquid Filled Blow-Fill-Seal Containers

The Seidenader BFS series are high performance inspection machines for a wide range of "blow, fill and seal" containers for parenteral products. The machines can directly interface with filling operation, leak testers and labeling machines.

Fields of application

Liquid parenterals in semi-rigid or rigid BFS containers from 20 ml up to 1000 ml.

Inspection criteria

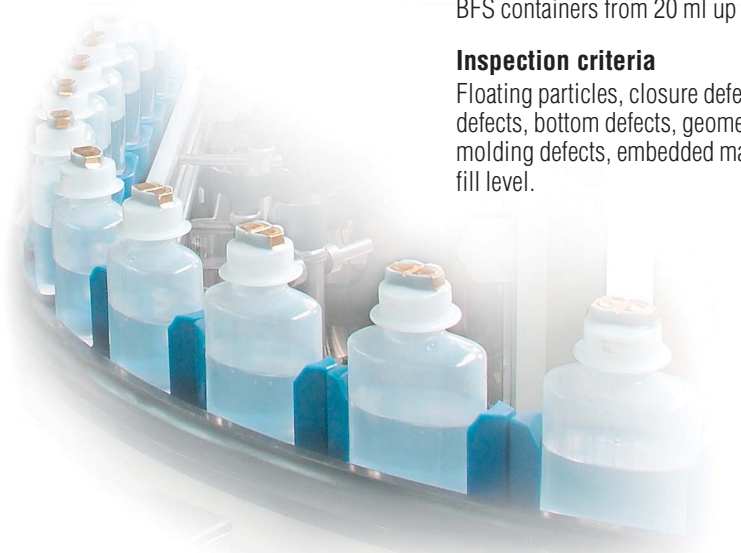
Floating particles, closure defects, seam defects, bottom defects, geometry defects, molding defects, embedded material and fill level.

Mode of operation

The containers are received in transport pucks. Cosmetic defects in closure and top part of the container can be inspected at the infeed module. A top chain supports the container in a way that the pucks can be removed and the lower part of the body and the bottom of the container are free for inspection.

In this section particles in the liquid are detected. After these inspections are completed the container is inserted back into its puck. A final inspection of the area where the container was supported ensures that no handling damages have occurred.

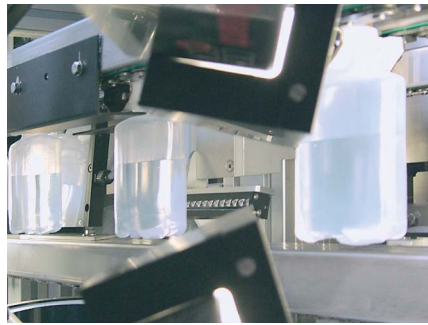
Reject systems separate defective products from the stream of good products.



Seidenader **BFS**

Advantages:

- Eliminates deformed products before they reach the next process
- Quick change over due to puc (process unit control) system
- Inline connection, no need to reorient the products between different machines
- Very tolerant towards common variations in acceptable quality
- Separates different reject categories
- Can be combined with coding systems to reduce risk of cross contamination
- Free access to all moving parts ease to maintenance
- Balcony design to allow effective cleaning in case of spillages
- Inspects container, closure, connection ports and hangers
- Connection to SCADA systems for integrated line management
- LED light systems for constant illumination
- Batch reports, machine status protocols and print out of vision system configurations



Bottom and side wall inspection



Reject station



Infeed and cap inspection

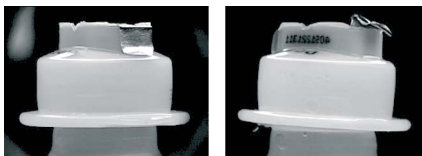


Outfeed



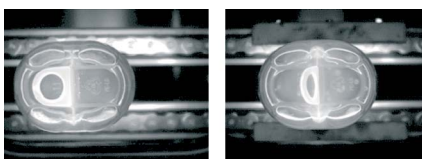
Side wall inspection: good

side wall deformed



Cap inspection: good

cap crooked, clip defect



Bottom inspection: good

bottom not ok

Technical data

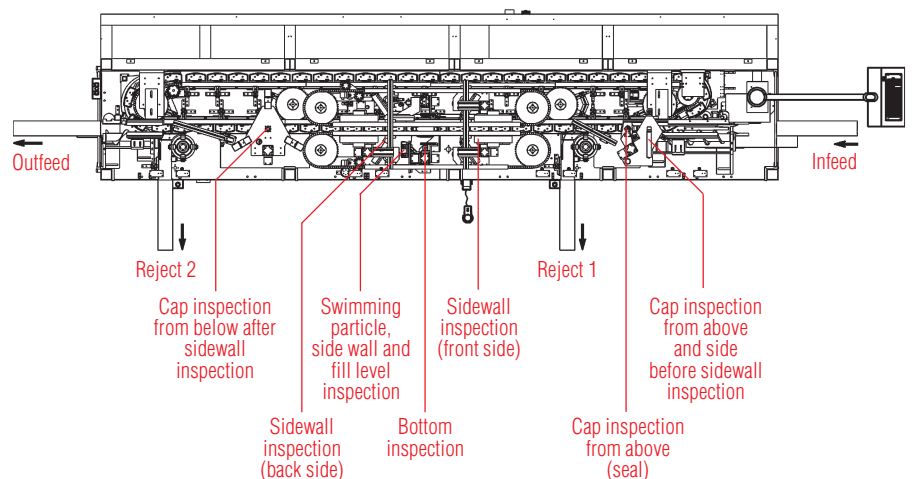
Application:	BFS containers for parenteral products
Range:	20 – 1000 ml
Throughput rate:	20 – 500 ml ca. 400 containers/min 1000 ml ca. 200 containers/min
Dimensions:	Base machine: ca. 4000 x 2000 x 2200 mm (L x W x H) Infeed/outfeed height: 1000 ± 50 mm Electrical cabinet: 1200 x 600 x 2100 mm (L x W x H)
Design:	Complies with current GMP recommendations, OSHA regulations and CE requirements. The electrical standard is EN 60204-1.
Voltage/Frequency:	400 V, 3 Ph + N + PE, 50 Hz, ca. 2 kW standard, all other voltages possible through transformer.
Compressed air:	Pressure 6 bar, consumption ca. 40 Nm ³ /h, connection 1/2"
Net weight:	Base machine ca. 6000 kg, electrical cabinet ca. 1000 kg

Seidenader

Seidenader Maschinenbau GmbH
Lilienthalstr. 8
D-85570 Markt Schwaben / Germany
Phone +49 8121 802-0
Fax +49 8121 802-100

Seidenader Equipment Inc.
25 Hanover Road
Florham Park, NJ 07932 / USA
Phone +1 973 301-9800
Fax +1 973 301-9090

info@seidenader.de, www.seidenader.de



Since we are constantly working on the improvement of our high-quality machines, the texts, illustrations and figures on these pages are illustrative only and not binding.